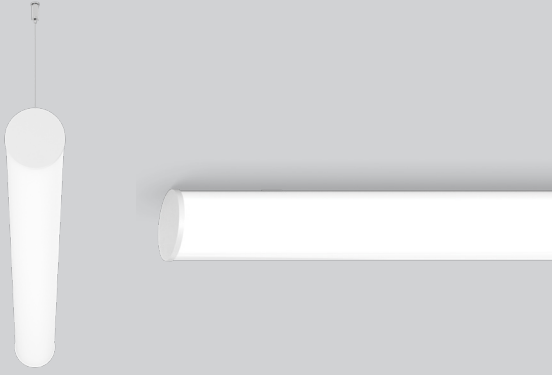


# TUBE DIRECT



## CERTIFICATIONS & COMPLIANCE

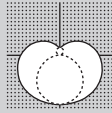


## FEATURES



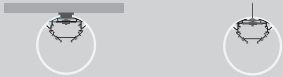
## PERFORMANCE

- Powder coated white
- Up to 143 lm/W
- CRI > 80 & CRI > 90



## MOUNTING

Surface      Pendant



## DIMENSIONS

### FIXTURE LENGTH

$L_{total} = L_{channel} + \frac{5}{8}''$  in total for two endcaps

## Catalog Number Example

TUBE-SUR-BL-OP-27K-C80-UNV-010V-0680LF-ST-24IN

A B C D E F G H I K L

### A RANGE

TUBE TUBE

### B MOUNTING

Surface SUR  
Pendant PDT

pendant suspension set includes cable suspension and one white power feeder with a white junction box cover

### C COLOR

White WH  
Black BL  
Grey GR

fine texture powder coated

### D LENS

HP opal cover OP

### E CCT

2700K 27K  
3000K 30K  
3500K 35K  
4000K 40K  
Custom CCT x x K

### F CRI

CRI > 80 C80  
CRI > 90 C90

### G VOLTAGE

120V / 277V UNV  
347V (only 0-10V dim) 347

### H DIMMING

0-10V 1% 010V  
Lutron EcoSystem LES1  
Quantum, Vive, GRAFIK Eye, HomeWorks

Power over ethernet POEC  
consult customer service for compatibility

for custom dimming protocol, please contact customer service

### I OUTPUT LM/FT

680lm/ft 100% 0680LF  
1050lm/ft 100% 1050LF

for custom lumen packages, please contact customer service

### J CIRCUIT / EM

Single circuit \*  
EMC night light circuit NLC  
minimum run length > 8'  
EMP EM#  
minimum run length 4' or 8'

\* leave blank

### K SHAPE / PATTERN

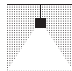
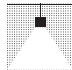
Linear ST

### L DIMENSIONS IN INCH

Linear 2' 24IN  
Linear 4' 48IN  
Linear 6' 72IN  
Linear 8' 96IN  
Linear custom # # IN

dimensions starting at 2' in 1' increments; for closer increments < 1', please contact customer service

### Technical data

	SIZE TYPE	LED COLOR TEMPERATURE	INPUT WATTS	DELIVERED LM TOTAL	DELIVERED LM / FT	DELIVERED LM DIRECT	OPTICAL EFFICIENCY	LUMINAIRE EFFICACY
 e LED	4' linear	40K	19W	2720lm	680lm/ft	2720lm	85%	143lm/W
	6' linear		29W	4080lm		4080lm		
	8' linear		38W	5440lm		5440lm		
 e² LED	4' linear	40K	31W	4200lm	1050lm/ft	4200lm	85%	136lm/W
	6' linear		46W	6300lm		6300lm		
	8' linear		61W	8400lm		8400lm		

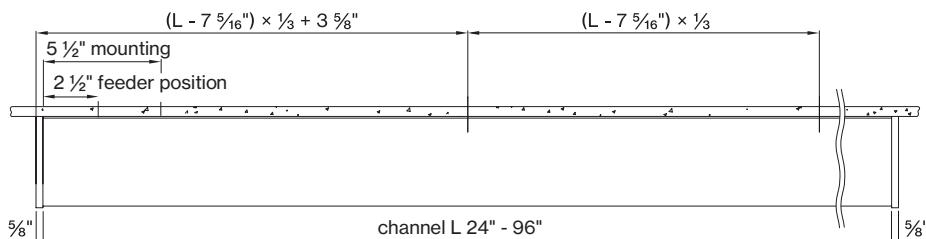
for 30K or 35K multiply lm value by 0.96

### Accessories

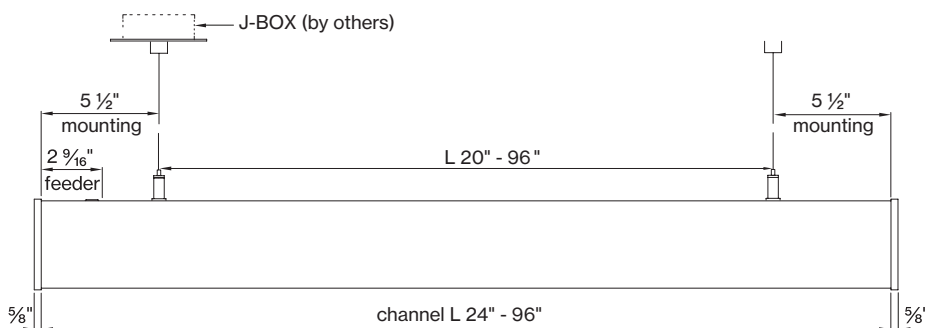
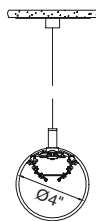
#### MOUNTING

extra 78" cable suspension with barrel mount	ACC - TUB - CSB - 78 - WH
extra junction box cover	ACC - JB - WH
on-grid suspension barrel mount	ACC - CSB - RW

#### Surface



#### Pendant



### TUBE mounting instructions

Get access to TUBE mounting instructions faster by scanning the QR code.

<https://www.basolighting.com/resources/mounting-instructions/tube>

