

CORNER LINEAR RUN



CERTIFICATIONS & COMPLIANCE



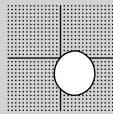
FEATURES

5 YEAR
limited
led warranty



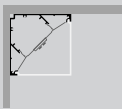
PERFORMANCE

- Bi-Directional light output
- Up to 135lm/W
- CRI > 80 & CRI > 90
- Damp rated



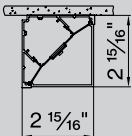
MOUNTING

Surface

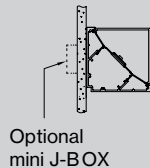


DIMENSIONS

down



ceiling slot/cove



FIXTURE LENGTH

$L_{total} = L_{channel} + \frac{5}{8}''$ in total for two endcaps

Catalog Number Example

CORNER-SUR-WH-OP-40K-C90-UNV-010V-0470LF-ST-24IN

A B C D E F G H J K L

A RANGE

CORNER CORNER

B MOUNTING

Surface SUR

C COLOR

White WH
Black BL
Gray GR
fine texture powder coated

D LENS

HP opal cover OP

E CCT

3000K 30K
3500K 35K
4000K 40K
Custom CCT XXX

F CRI

CRI > 80 C80
CRI > 90 C90

G VOLTAGE

120V / 277V UNV
347V (only 0-10 V dim) 347

H DIMMING

0-10V 1% 010V
Lutron EcoSystem LES1
Quantum, Vive, GRAFIK Eye,
HomeWorks
Power over ethernet POEC

consult customer service for compatibility

for custom dimming protocol, please contact customer service

I OUTPUT LM/FT

470lm/ft 100% ↓ 0470LF
760lm/ft 100% ↓ 0760LF
940lm/ft 100% ↓ 0940LF
Custom lm/ft XXXXLF
custom lumen up to 1000 lm/ft

J CIRCUIT / EM

Single circuit *
EMC night light circuit NLC
EMB available in 4ft and 8ft EM#
* leave blank

K SHAPE / PATTERN

Linear / straight ST

L DIMENSIONS IN INCH

Linear 2' 24IN
Linear 4' 48IN
Linear 6' 72IN
Linear 8' 96IN
Linear custom ###IN

dimensions starting at 2' in 1' increments; for closer increments < 1', please contact customer service

Technical data

CORNER DIRECT

LUMEN OUTPUT MULTIPLIER*

Color Temperature

CRI

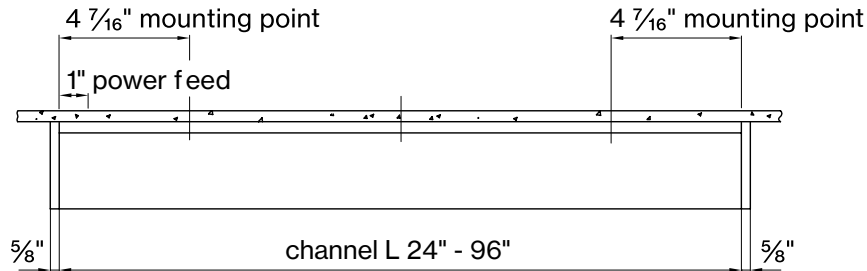
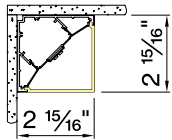
Delivered Lumens	CCT	CRI	Input Watts	Luminaire Efficacy	LUMEN OUTPUT MULTIPLIER*		
					Color Temperature	CRI	
						80+	90+
470 lm/ft ↓	4000K	CRI > 80	3.9 W/ft	103 lm/W	4000K	1	0.86
760 lm/ft ↓	4000K	CRI > 80	5.9 W/ft	102 lm/W	3500K	0.96	0.84
940 lm/ft ↓	4000K	CRI > 80	8.2 W/ft	98 lm/W	3000K	0.95	0.82
					2700K	0.91	0.78

*To calculate the color temperatures >4000K and CRI 90, multiply the values in the lumen output tables.

Mounting

down

$L_{total} = L_{channel} + \frac{5}{8}"$ in total for two endcaps



CORNER mounting instructions

Get access to CORNER mounting instructions faster by scanning the QR code.

<https://www.basolighting.com/resources/mounting-instructions/corner>

